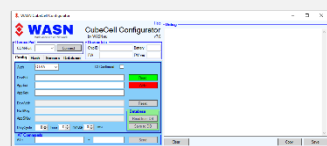


ModularNode MK3



Description

This watertight Node includes a 4000mAh LiPo battery, which can be charged with an external solar panel. The modular design allows to use the sensors you need. You can connect up to 3 sensors directly to the node. If you need more sensors you can easily add them with y-cables. The node can be upgraded with 2 internal modules for many other interfaces.

Configuration is done with our WASN Configurator software for Microsoft Windows.

Specifications

- Timer and interrupt triggered measurement
- Integrated 4000mAh LiPo battery
- Solar charge option
- IP67 rated casing
- Complete modular design

Technical details

- based on an ASR650x MCU
- DeepSleep current of 16uA
- 3 external sensor interfaces with IIC and OneWire
- 2 internal plugin ports for various expansions:
 - Serial interface
 - RS485
 - Digital I/O
 - Analog inputs
 - ATECC608 crypto chip
 - ...

Supported Sensors:

- | | |
|--------------------------|----------------------------|
| • Temperature, Humidity | • Wind speed and direction |
| • Air pressure | • Vibration |
| • Soil moisture | • Magnetic field |
| • Leaf wetness | • Different gases like CO2 |
| • UV and light intensity | • ... |