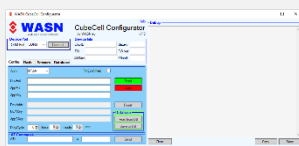


IndoorNode



Description

This Node includes a 3000mAh LiPo battery and is designed for indoor use.

It uses a BME280 or BME680 for measurement of temperature, humidity and air pressure. If equipped with the BME680 sensor it can also measure the air quality index.

Configuration is done with our WASN Configurator software for Microsoft Windows.

Specifications

- Timer and interrupt triggered measurement
- Integrated 3000mAh LiPo battery

Technical details

- based on an ASR650x MCU
- DeepSleep current of 16uA
- Choice of 2 sensors:
 - BME280
 - BME680

Supported Sensors:

- Temperature
- Humidity
- Air pressure
- Air Quality Index