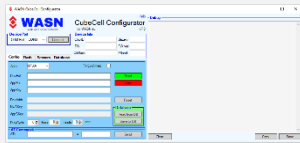


OutdoorNode



Description

This watertight Node includes a 3000mAh LiPo battery, which can be charged with an external solar panel.

It uses an integrated BME680 sensor for measurement of temperature, humidity, air pressure and air quality index.

The modular design allows to use the sensors you need. You can connect up to 1 sensors directly to the node. If you need more sensors you can easily add them with y-cables.

Configuration is done with our WASN Configurator software for Microsoft Windows.

Specifications

- Timer and interrupt triggered measurement
- Integrated 3000mAh LiPo battery
- Solar charge option
- IP67 rated casing
- Complete modular design

Technical details

- based on an ASR650x MCU
- DeepSleep current of 16uA
- 1 internal BME680 sensor
- 1 external sensor interfaces with IIC

Supported Sensors:

- Temperature, Humidity
- Air pressure
- Soil moisture
- Leaf wetness
- UV and light intensity
- Wind speed and direction
- Vibration
- Magnetic field
- Different gases like CO2
- ...